

Truck width of just 820 mm

**Narrow working aisle width
for use in confined warehouse
and block stacked areas**

**Ergonomic sideways seat position
for fatigue-free operation**

**Multi-function joystick
for effortless operation**

**3-phase AC technology for
high productivity**



ESC 214/216 and ESC 214z/216z

Electric sideways seat stackers (1400/1600 kg)

Jungheinrich ESC 214/216 electric sideways seat stackers are ideally suited for longer distances during stacking and retrieval. With a width of just 820 mm and a narrow working aisle width, the ESC shows particular strength in applications where space is limited and in block stacking operations.

The comfortable sideways seating position provides the operator with excellent visibility, which is an advantage during frequent changes of direction. Individual height adjustment of the foot well pro-

vides a relaxed work environment for operators of varied heights.

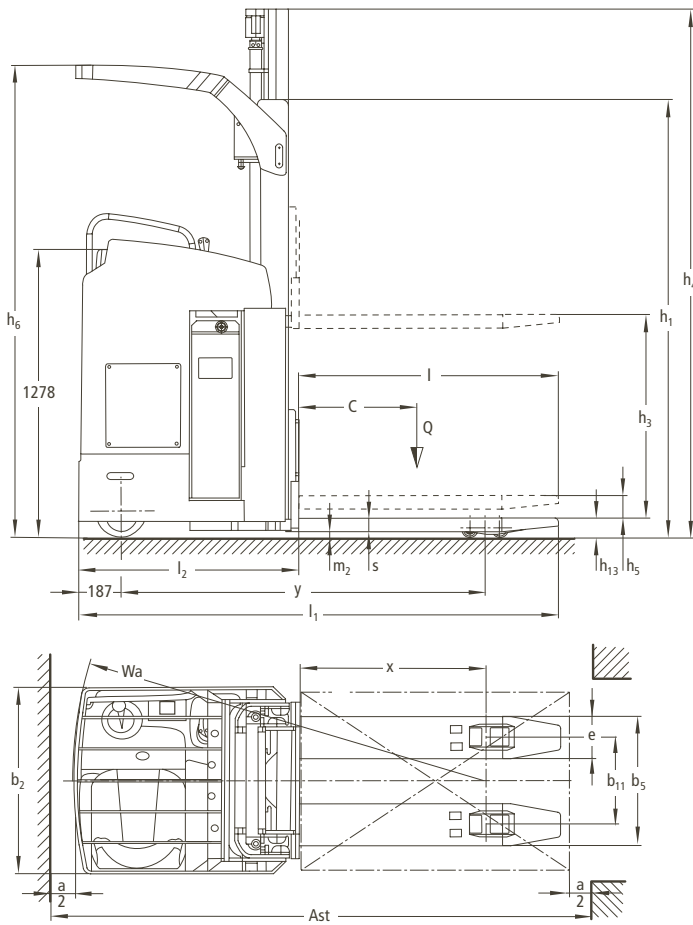
Other features include:

- Powerful innovative 2.8 kW 3-phase AC drive motor for high acceleration and performance.
- High residual capacities and powerful lift motor.
- Particularly robust chassis for high operational demands.
- Display with steering position display and travel programme selection (optional).

- Electric steering for easy manoeuvring with few steering wheel turns.
- Excellent energy management for low operating costs.

The initial lift of the ESC 214z/216z allows it to cope extremely easily with uneven floors. All travel and lift functions are performed using the multi-functional joystick, within easy reach. Thanks to the compact design and excellent ergonomics, the ESC is the ideal stacker for working in restricted spaces.

ESC 214/216 and ESC 214z/216z



Standard mast types (mm)										
Designation	Closed height h_1	Free lift h_2	Lift height h_3	Extended height h_4	Height over overhead guard h_6	Closed height h_1	Free lift h_2	Lift height h_3	Extended height h_4	Height over overhead guard h_6
	ESC 214/214z					ESC 216/216z				
ZT mast	1995	100	2900	3422	2093	1995	100	2800	3372	2093
	2145	100	3200	3722	2243	2145	100	3100	3672	2243
	2345	100	3600	4122	2288	2345	100	3500	4072	2288
	2595	100	4100	4622	2288	2595	100	4000	4572	2288
	2695	100	4300	4822	2288	2695	100	4200	4772	2288
ZZ mast	1945	1420	2900	3422	2093	1945	1373	2800	3372	2093
	2095	1570	3200	3722	2243	2095	1523	3100	3672	2243
	2295	1770	3600	4122	2288	2295	1723	3500	4072	2288
	2545	2020	4100	4622	2288	2545	1973	4000	4572	2288
	2645	2120	4300	4822	2288	2645	2073	4200	4772	2288
DZ mast	1945	1947	4300	4775	2093	1945	1376	4200	4770	2093
	2295	1846	5350	5825	2288	2295	1726	5250	5820	2288

Technical data in line with VDI 2198 as at : 08/2010

Identification	1.1	Manufacturer (abbreviation)	Jungheinrich	Jungheinrich	Jungheinrich	Jungheinrich	1.1
	1.2	Manufacturer's type designation	ESC 214	ESC 216	ESC 214z	ESC 216z	1.2
	1.3	Drive	electric	electric	electric	electric	1.3
	1.4	Operator type	seat	seat	seat	seat	1.4
	1.5	Load capacity/rated load Q (t)	1.4	1.6	1.4	1.6	1.5
	1.6	Load centre distance c (mm)	600	600	600	600	1.6
	1.8	Load distance x (mm)	860	860	874 ¹⁾	874 ¹⁾	1.8
	1.9	Wheelbase y (mm)	1648	1648	1677 ¹⁾	1677 ¹⁾	1.9
	Weights	2.1	Service weight incl. battery (see line 6.5) kg	1590	1590	1660	1660
2.2		Axle loading, laden front/rear kg	1316/1674	1340/1850	1285/1775	1370/1890	2.2
2.3		Axle loading, unladen front/rear kg	1113/477	1113/477	1162/498	1162/498	2.3
Wheels, Chassis	3.1	Tyres	polyurethane	polyurethane	polyurethane	polyurethane	3.1
	3.2	Tyre size, front mm	230x77	230x77	230x77	230x77	3.2
	3.3	Tyre size, rear mm	85x85	85x85	85x85	85x85	3.3
	3.4	Additional wheels (dimensions)	140x126 ⁴⁾	140x126 ⁴⁾	140x126 ⁴⁾	140x126 ⁴⁾	3.4
	3.5	Wheels, number front rear (x = driven wheels)	2-1x/4	2-1x/4	2-1x/4	2-1x/4	3.5
	3.6	Track width, front b ₁₀ (mm)	544	544	544	544	3.6
	3.7	Track width, rear b ₁₁ (mm)	385	385	385	385	3.7
Basic Dimensions	4.2	Closed mast height h ₁ (mm)	1995	1995	1995	1995	4.2
	4.3	Free lift h ₂ (mm)	100	100	100	100	4.3
	4.4	Lift (standard mast) h ₃ (mm)	2900	2800	2900	2800	4.4
	4.5	Height, mast extended h ₄ (mm)	3422	3422	3422	3422	4.5
	4.6	Initial lift h ₅ (mm)	–	–	125	125	4.6
	4.7	Height of overhead guard (cabin) h ₆ (mm)	2095 ²⁾	2095 ²⁾	2095 ²⁾	2095 ²⁾	4.7
	4.8	Seat height/stand height h ₇ (mm)	950	950	950	950	4.8
	4.15	Height, lowered h ₁₃ (mm)	90	90	90	90	4.15
	4.19	Overall length l ₁ (mm)	2125	2125	2140	2140	4.19
	4.20	Length to face of forks l ₂ (mm)	975	975	990	990	4.20
	4.21	Overall width b ₁ /b ₂ (mm)	820/–	820/–	820/–	820/–	4.21
	4.22	Fork dimensions s/e/l (mm)	60/185/1150	65/185/1150	60/185/1150	60/185/1150	4.22
	4.25	Width across forks b ₃ (mm)	570	570	570	570	4.25
	4.32	Ground clearance, centre of wheelbase m ₂ (mm)	30	30	25	25	4.32
	4.34	Aisle width for pallets 800 x 1200 lengthways Ast (mm)	2383 ³⁾	2383 ³⁾	2398 ³⁾	2398 ³⁾	4.34
4.35	Turning radius Wa (mm)	1843	1843	1872 ¹⁾	1872 ¹⁾	4.35	
Performance Data	5.1	Travel speed, laden/unladen km/h	9.1/9.1	9.1/9.1	9.1/9.1	9.1/9.1	5.1
	5.2	Lift speed, laden/unladen m/s	0.15/0.24	0.13/0.24	0.14/0.23	0.14/0.23	5.2
	5.3	Lowering speed, laden/unladen m/s	0.42/0.42	0.42/0.42	0.42/0.38	0.42/0.38	5.3
	5.8	Gradeability, laden/unladen %	7/12	7/12	7/12	7/12	5.8
	5.10	Service brake	electric	electric	electric	electric	5.10
E-Motor	6.1	Drive motor rating S ₂ 60 min. kW	2.8	2.8	2.8	2.8	6.1
	6.2	Lift motor rating at S ₃ 10% kW	3	3	3	3	6.2
	6.3	Battery acc. to DIN 43531/35/36 A, B, C, no	no	no	no	no	6.3
	6.4	Battery voltage, nominal capacity K ₅ V/Ah	24/465	24/465	24/465	24/465	6.4
	6.5	Battery weight kg	380	380	380	380	6.5
Others	8.1	Type of drive control	AC SpeedControl	AC SpeedControl	AC SpeedControl	AC SpeedControl	8.1

- 1) load section, raised: –78 mm
2) see mast table
3) diagonal to VDI: +190 mm
4) executed as double roller

Make use of the advantages

Innovative three-phase AC technology

Better performance coupled with reduced operating costs. Make use of these advantages:

- High efficiency levels with excellent energy management.
- Powerful acceleration.
- Quick travel direction change without a pause.
- No carbon brushes – maintenance-free drive motor.
- Two-year warranty on the drive motor.

Productivity enhancing ergonomics

The sideways seating position ensures optimum visibility and prevents neck problems caused by frequent direction changes. A safety switch in the footwell ensures maximum safety.

- Comfortable seat with weight adjustment.
- Padded armrest.



Comfortable seating position with height-adjustable footplate



Ergonomic layout of all controls

- Padded knee area.
- Grab handle for safe entry (serves also as the mounting for a storage unit or a radio data terminal).

Travel comfortably and safely

Safe speed regulation by electronic SpeedControl. SpeedControl ensures maximum safety and effortless control of speed in all situations.

- Roll-back protection on gradients by self-acting brake.
- Constant travel speed both ways on gradients.
- Energy recovery by regenerative braking.
- Particularly smooth stepless operation.

Easy operation and good all-round visibility

- Operation of all drive and lift functions by multi-functional joystick.
- Proportional hydraulics for precise load positioning.
- Smooth electric steering.
- Protected seating position within the truck profile.
- Excellent all-round visibility with no struts; good visibility through the mast and overhead guard.

Narrow truck with high manoeuvrability

- With a truck width of only 820 mm, the ESC is ideal for use in narrow aisles and block storage.
- Narrow working aisle width and well protected operator position for outstanding operation in narrow working aisles.

Powerful battery

- 3 EPZS 465 Ah.
- Sideways battery removal on rollers.

Robustness and service-friendliness

- Easy access to the controller and electronics.
- Side opening access to the drive components.
- Robust, enclosed chassis.



Grab handle for safe access and for the fitting of various options

Optional equipment

- Various storage options.
- Heated seat.
- Vertical load guard.
- Display (travel direction, steering set up, battery status, operating hours, time of day, available travel programmes).

Jungheinrich UK Ltd.

Head Office:

Sherbourne House · Sherbourne Drive
Tilbrook · Milton Keynes MK7 8HX
Phone 01908 363100
Fax 01908 363180

info@jungheinrich.co.uk
www.jungheinrich.co.uk



Jungheinrich trucks conform to the European Safety Requirements.

JUNGHEINRICH
Well worthwhile