

Pedestrian pallet truck with additional mast lift for back-friendly order picking and stacking

Powerful with maintenance-free 3-phase AC drive motor

Manoeuvrable and compact due to narrow and short chassis

Fully manoeuvrable with tiller in upright position due to crawl speed button

Integrated charger for easy charging at every mains socket (optional)



EJE C20

Electric pedestrian pallet truck (2000 kg)

The EJE C20 is a pedestrian pallet truck that can also be used for order picking and light stacker operation. In addition to the support arm lift, the load can be lifted to a total height of 759 mm with a single mast integrated in the battery compartment. Order picking articles can thus be positioned at a back-friendly picking height.

Light stacking tasks, such as taking half pallets off a Euro pallet can be economically and easily undertaken with the separate support arm and mast lift (optional). The capacity of the support arm lift is 2000 kg and that of the mast lift 700 kg.

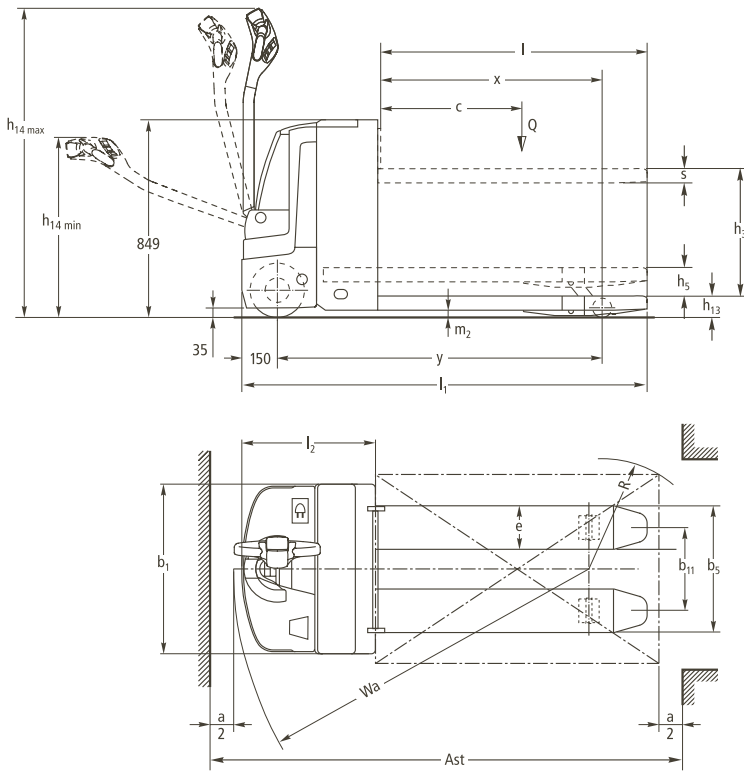
There is also the powerful drive motor with its AC technology. Its optimised efficiency factor ensures high speed and powerful acceleration with low energy consumption in every situation – the ideal preconditions for fast, efficient goods throughput.

The operator has everything under control at any time with the low mounted long tiller. It ensures the essential safe distance between operator and truck. Above all, the EJC C20 never gets “too close” to the operator on corners. And if space is particularly confined, the crawl speed button facilitates safe travel with the tiller in an

upright position. One touch of a button is sufficient: the brake is released and activation of the travel switch controls travel at much reduced speed.

The completely redeveloped multifunction tiller head is full of innovations: enclosed sensor system (IP 65) for top breakdown protection, rocker switch with touchless operating electronics for perfect operation in any tiller position, well-organised arrangement of switches for excellent ergonomics.

EJE C20



Technical Data in line with VDI 2198 as at: 05/2008

Identification	1.1	Manufacturer (abbreviation)		Jungheinrich	1.1	
	1.2	Manufacturer's type designation		EJE C20	1.2	
	1.3	Drive		electric	1.3	
	1.4	Operator type		pedestrian	1.4	
	1.5	Load capacity/rated load	Q (t)		2.0	1.5
		Load capacity mast lift	Q (t)		0.7	
		Load capacity support arm lift	Q (t)		2.0	
	1.6	Load centre distance	c (mm)		600	1.6
1.8		Load distance, centre of drive axle to fork	x (mm)	903 ¹⁾	1.8	
1.9	Wheelbase	y (mm)	1480 ¹⁾	1.9		
Weights	2.1	Service weight incl. battery (see line 6.5)	kg	555	2.1	
	2.2	Axle loading, laden front/rear	kg	860/1695	2.2	
	2.3	Axle loading, unladen front/rear	kg	425/130	2.3	
Wheels, Chassis	3.1	Tyres		PU/PU	3.1	
	3.2	Tyre size, front		230 x 77	3.2	
	3.3	Tyre size, rear		82 x 100	3.3	
	3.4	Additional wheels (dimensions)		100 x 40	3.4	
	3.5	Wheels, number front rear (x = driven wheels)		1x + 2/2 or 4	3.5	
	3.6	Tread, front	b ₁₀ (mm)	508	3.6	
	3.7	Tread, rear	b ₁₁ (mm)	343	3.7	
Basic Dimensions	4.4	Lift (standard mast)	h ₃ (mm)	547	4.4	
	4.6	Initial lift	h ₅ (mm)	122	4.6	
	4.9	Height of tiller in drive position min./max.	h ₁₄ (mm)	797/1313	4.9	
	4.15	Height, lowered	h ₁₃ (mm)	90	4.15	
	4.19	Overall length	l ₁ (mm)	1734	4.19	
	4.20	Length to face of forks	l ₂ (mm)	584	4.20	
	4.21	Overall width	b ₁ /b ₂ (mm)	720/-	4.21	
	4.22	Fork dimensions	s/e/l (mm)	60/187/1150	4.22	
	4.25	Distance between fork-arms	b ₅ (mm)	540	4.25	
	4.32	Ground clearance, centre of wheelbase	m ₂ (mm)	30	4.32	
	4.33	Aisle width for pallets 1000 x 1200 crossways	Ast (mm)	1968 ²⁾	4.33	
4.34	Aisle width for pallets 800 x 1200 lengthways	Ast (mm)	2018 ³⁾	4.34		
4.35	Turning radius	Wa (mm)	1521 ¹⁾	4.35		
Performance Data	5.1	Travel speed, laden/unladen	km/h	6.0/6.0	5.1	
	5.2	Lift speed, laden/unladen	m/s	0.12/0.17	5.2	
	5.3	Lowering speed, laden/unladen	m/s	0.20/0.13	5.3	
	5.8	Max. gradeability, laden/unladen	%	8/20	5.8	
	5.10	Service brake		electric	5.10	
Electric Engine	6.1	Drive motor rating S ₂ 60 min.	kW	1.0	6.1	
	6.2	Lift motor rating at S ₃ 15 %	kW	1.2	6.2	
	6.3	Battery acc. to DIN 43531/35/36 A, B, C, no		no, B	6.3	
	6.4	Battery voltage, nominal capacity K ₅	V/Ah	24/150	6.4	
	6.5	Battery weight	kg	151	6.5	
	6.6	Energy consumption acc. to VDI cycle	kWh/h	0.44	6.6	
Others	8.1	Type of drive control		AC SpeedControl	8.1	
	8.4	Sound level at the driver's ear according to EN 12053	dB(A)	70	8.4	

- 1) load section lowered: + 53 mm
 2) load section lowered: + 53 mm; diagonal acc. to VDI: + 361 mm
 3) load section lowered: + 53 mm; diagonal acc. to VDI: + 201 mm

Make use of the advantages

Innovative 3-phase AC technology

Jungheinrich motors with 3-phase AC technology provide increased efficiency with reduced operating costs over the entire lifespan of the truck whilst making use of the following advantages:

- High efficiency factor with excellent energy management.
- Powerful acceleration.
- Stepless regulation of travel speed via travel switch.
- Quick direction change without customary "pause for thought".
- No carbon brushes – the drive motor is maintenance-free.
- 2-year warranty on drive motor.

Comfortable travelling

Jungheinrich impulse control SpeedControl facilitates comfortable, safe travelling:

- The speed stipulated on the travel switch is kept constant in every travel situation – including up and down gradients.
- The EJE C20 brakes automatically preventing unintentional rolling backward when operating on a ramp.
- Individually adjustable travel parameters (acceleration, top speed, motor brake) facilitate optimum adjustment to suit any requirement.
- The operator can select between 3 different travel programs (optional).



Back-friendly lift height with optimised vertical load guard

- Energy reclamation with regenerative braking on deceleration.
- Very low noise level during travelling.

Informed at any time

Extensive control instruments and adjustment opportunities keep everything under control at a glance:

- Battery discharge indicator (3-colour luminous diode) with lift lock out.
- Adjustable travel parameters with CanDis and CanCode (optional).
- Information display CanDis (optional) with additional operating hour meter and service data memory.
- Truck activation via PIN and selection of 3 travel programs via CanCode (optional).

Optimised cornering

Sprung and hydraulically cushioned support wheels – linked via the coupling rocker "ProTraLink" – distribute stabilising forces dependent on travel conditions: evenly over all wheels during straight travel; concentrated on the outer support wheel during cornering.

Reduced maintenance

Service-friendly components ensure significant long-term reduction in operating costs:

- Maintenance-free AC drive motor with no carbon brushes.
- Easy access to all components through one-piece front cover held by only two screws.
- Secure protection for controls and plugs, e.g. from dust and damp, due to being enclosed according to IP 54.
- Less wear on support wheels during diagonal ramp approach due to level adjustment: Both mechanically connected support wheels are always at the same height. The otherwise freely suspended support wheel does not catch and will not be damaged.



Application in the shops

Optimised pallet handling

- Enclosed skids at both fork tips for sideways entry in empty Euro pallets or baseboard pallets.
- Separate operation of mast and support arm lift to pick up half/quarter pallets from Euro pallets (optional).

Long operating times

The energy-saving AC technology in combination with battery capacities of up to 200 Ah are the best guarantee for long operating times:

- 2 PzS 200 Ah Heavy Duty battery.
- Integrated charger (24V/30A for wet batteries and maintenance-free batteries) for easy charging at any mains socket (optional).

Additional equipment

- Writing desk with lighting.
- Vertical load guard.
- Special switch lock for easy release of brake.
- Vertical load guard.
- Cold store design.

Jungheinrich UK Ltd.

Head Office:

Sherbourne House · Sherbourne Drive
Tilbrook · Milton Keynes MK7 8HX
Phone 01908 363100
Fax 01908 363180

info@jungheinrich.co.uk
www.jungheinrich.co.uk

Jungheinrich AG
ISO 9001, ISO 14001
Certification of Quality and
Environment Management.



Jungheinrich trucks
conform to the European
Safety Requirements.



JUNGHEINRICH
Well worthwhile