

Corrosion resistant and water-jet protected with easy-clean design

Foodstuff neutral due to smooth abrasion resistant surfaces

IP 65 sealed multifunction tiller head

Precise lifting and lowering using the tiller with proportional hydraulics

Extremely flexible with rising support-arm

For application in demanding environments



EJC i12z

Electric pedestrian stacker made from stainless steel (1200 kg)

The EJCi12z combines the advantages of a stainless steel chassis with proven Jungheinrich drive and control technology. The truck is designed for demanding transport tasks up to 1200 kg and a lift height of 2500 mm.

The EJC i12z offers the highest specification for corrosive and humid environments and satisfies the most stringent hygienic regulations. With these specifications the truck is ideally suited for the food handling, chemical

and pharmaceutical industries. High quality stainless steel offers abrasion resistant and smooth surfaces that resist the adhesion of contaminants and therefore the spreading of germs and bacteria even in the most demanding environments.

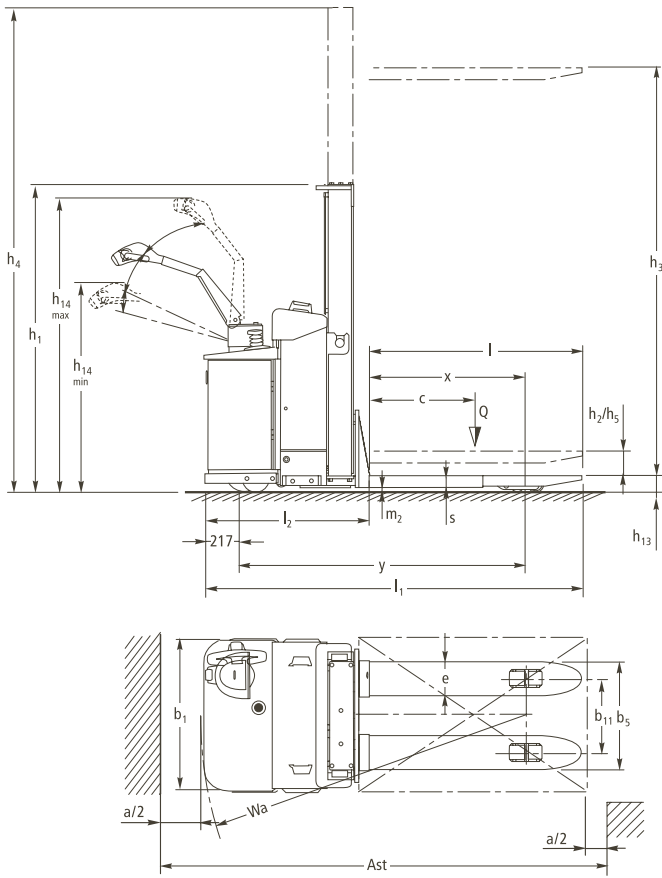
The robust construction of the truck is designed for regular high pressure cleaning and disinfection. Water can freely flow over the continuous bevelled surfaces, the special

seals inhibiting the ingress of fluids into the drive and electronic controls.

With the rising support-arms, the EJC i12z can easily negotiate uneven floors or ramps.

For multi-shift applications, the side removal of the battery is the best solution for efficient, safe and fast material handling.

EJC i12z



Technical data in line with VDI 2198 as at: 05/2008

Identification	1.1	Manufacturer (abbreviation)		Jungheinrich	1.1
	1.2	Manufacturer's type designation		EJC i12z	1.2
	1.3	Drive		electric	1.3
	1.4	Operator type		pedestrian	1.4
	1.5	Load capacity/rated load	Q (t)	1.2	1.5
	1.6	Load centre distance	c (mm)	600	1.6
	1.8	Load distance, centre of drive axle to fork	x (mm)	808 ¹⁾	1.8
	1.9	Wheelbase	y (mm)	1525	1.9
	Weights	2.1	Service weight incl. battery (see line 6.5)	kg	1160
2.2		Axle loading, laden front/rear	kg	991/1369	2.2
2.3		Axle loading, unladen front/rear	kg	854/306	2.3
Wheels, Chassis	3.1	Tyres		PU	3.1
	3.2	Tyre size, front	mm	230x70	3.2
	3.3	Tyre size, rear	mm	82x66	3.3
	3.4	Additional wheels (dimensions)	mm	125x54	3.4
	3.5	Wheels, number front rear (x = driven wheels)		2-1x/4	3.5
	3.6	Tread, front	b ₁₀ (mm)	464	3.6
	3.7	Tread, rear	b ₁₁ (mm)	380	3.7
Basic Dimensions	4.2	Closed mast height	h ₁ (mm)	1780	4.2
	4.3	Free lift	h ₂ (mm)	56	4.3
	4.4	Lift	h ₃ (mm)	2500	4.4
	4.6	Initial lift	h ₅ (mm)	114	4.6
	4.9	Height of tiller in drive position min./max.	h ₁₄ (mm)	861/1523	4.9
	4.15	Height, lowered	h ₁₃ (mm)	90 ³⁾	4.15
	4.19	Overall length	l ₁ (mm)	2084	4.19
	4.20	Length to face of forks	l ₂ (mm)	934	4.20
	4.21	Overall width	b ₁ /b ₂ (mm)	785/-	4.21
	4.22	Fork dimensions	s/e/l (mm)	55/180/1150	4.22
	4.25	Distance between fork-arms	b ₅ (mm)	560	4.25
	4.32	Ground clearance, centre of wheelbase	m ₂ (mm)	21	4.32
	4.34	Aisle width for pallets 800x1200 lengthways	Ast (mm)	2505	4.34
4.35	Turning radius	Wa (mm)	1745 ¹⁾	4.35	
Performance Data	5.1	Travel speed, laden/unladen	km/h	5.3/5.3	5.1
	5.2	Lift speed, laden/unladen	m/s	0.046/0.06	5.2
	5.3	Lowering speed, laden/unladen	m/s	0.059/0.053	5.3
	5.8	max. gradeability, laden/unladen	%	8/15	5.8
	5.10	Service brake		electric	5.10
Electric Engine	6.1	Drive motor rating S ₂ 60 min	kW	1.6	6.1
	6.2	Lift motor rating at S ₃ 10 %	kW	2.2	6.2
	6.3	Battery acc. to DIN 43531/35/36 A, B, C, no		B	6.3
	6.4	Battery voltage, nominal capacity K ₅	V/Ah	24/330 ²⁾	6.4
	6.5	Battery weight	kg	291	6.5
Others	8.1	Type of drive control		AC SpeedControl	8.1
1) lifted: +64 mm 2) plastic battery tray 3) with fully enclosed forks option: 95 mm					

This specification sheet according to VDI regulation 2198 only provides technical values for the standard truck. Non-standard tyres, different masts, additional equipment, etc. could produce other values. Right reserved for technical changes and improvements.

Make use of the advantages



Countersunk key switch and battery discharge indicator

Hygienic design

- Foodstuff neutral surfaces resistant to the adhesion of contaminants and therefore spread of germs.
- Stainless steel hygienic, smooth and abrasion resistant surfaces.
- Closed fork section ensures hygienic separation of the load wheels and the goods to be carried (optional).
- Conforms to EU Directives for food hygiene.



Ready for battery changing: open battery cover and remove side panel

Easy-clean design

- Bevelled surfaces allowing water to easily flow off them.
- Sealed multi-function tiller head (IP 65) to safeguard against high pressure cleaning and disinfection.
- Strong overlapping battery compartment hood protects the battery against the penetration of cleaning fluids.

High quality materials for demanding applications

The use of material suited to the application guarantees a high reliability and long life:

- Surfaces made from high quality stainless steel.
- To reduce corrosion the battery sits in a plastic tank which is on a carrier and installed on slide rails.
- Sealed and corrosion proof controls.

Ergonomic operation

The new generation multifunction tiller head perfectly meets the ergonomic demands of the operator.

- Clear colour coding including buttons with countersunk/risen buttons for intuitive control.
- An easy grip with close affinity to the hand posture of the operator.
- Crawl button on the underside of the tiller arm control head for easily reachable operation with the tiller in the upright position.



Ergonomic tiller with intuitive buttons



Excellent service access

- Rocker switches for comfortable operation in every tiller arm position.
- Centrally positioned large emergency stop button with safety cover.
- 3 colour LED battery monitor shows the battery discharge status.
- Battery changing from above or sideways with plastic sliders.

Quick and simple transportation

Proportional hydraulics and rising support-arm provide the best specification for fast, safe and ergonomic operation.

- Precise positioning.
- Fast raising and lowering of the forks.
- Smooth and shock-free pick up and placement of the load.
- Rising support-arm for effortless negotiation of uneven floors, ramps or loading bridges.

Innovative AC technology

Jungheinrich AC technology motors offer high performance and reduction of operating costs:

- Powerful acceleration.
- Higher efficiency with excellent energy consumption.
- Faster travel direction change without delay.
- No carbon brushes – the drive motor is maintenance free.
- 2 year guarantee on the drive motor.

Jungheinrich UK Ltd.

Head Office:

Sherbourne House · Sherbourne Drive
Tilbrook · Milton Keynes MK7 8HX
Phone 01908 363100
Fax 01908 363180

info@jungheinrich.co.uk
www.jungheinrich.co.uk

Jungheinrich AG
ISO 9001, ISO 14001
Certification of Quality and
Environment Management.



Jungheinrich trucks
conform to the European
Safety Requirements.



JUNGHEINRICH
Well worthwhile